



Beaufort County Public Works
Stormwater Infrastructure
Project Summary

Project Summary: Port Royal Island Vacuum Truck - Tanglewood Drive, Jefferson Street

Project #: 2010-025 Completed: Aug-09

Narrative Description of Project:
 Jetted (1) crossline pipe and (1) twin crossline pipe.

Material Cost, Rental Equipment Summary, and Labor

Material	Unit	Cost/Unit	Qty	Cost
Water	gallon	\$0.01	600.0	\$6.00
Diesel	gallon	\$2.37	5.0	\$11.85
Labor	hours		7.0	\$225.20
Total Cost of Materials, Rental Equip., and Labor				\$243.05

Note: Labor cost includes the employee's salary plus fringe benefits.

Equipment Cost

Item	Asset	Cost/Hour	Hrs.	Cost
Vacuum Truck	22812	\$20.30	3.0	\$60.90
Total Equipment Cost				\$60.90

Cost/hour excludes fuel cost.

Total Cost: \$303.95

Site Photographs

Before

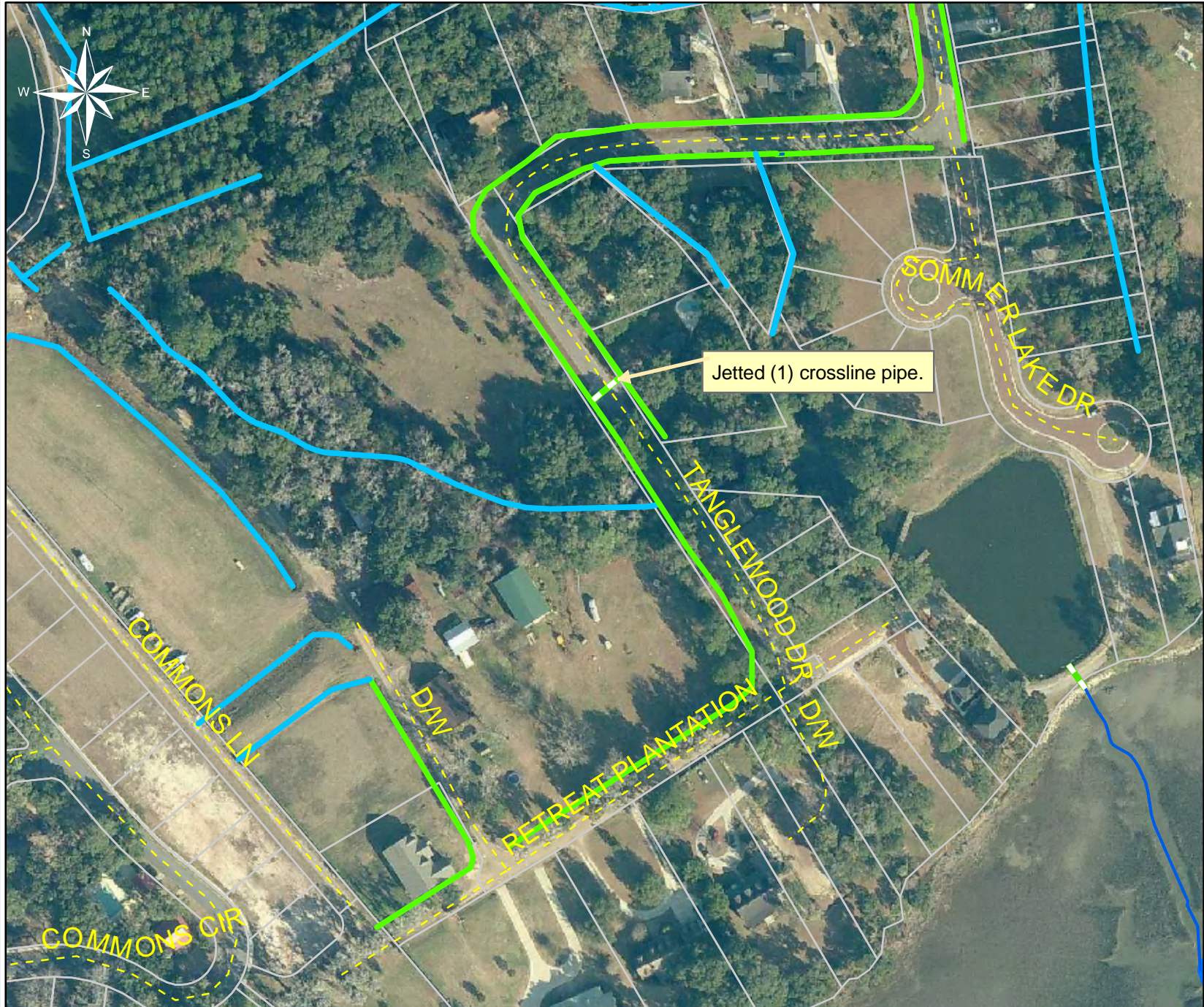


During



After





Project:
Tanglewood Drive

Activity:
Vacuum Truck

Project #:
2010-025

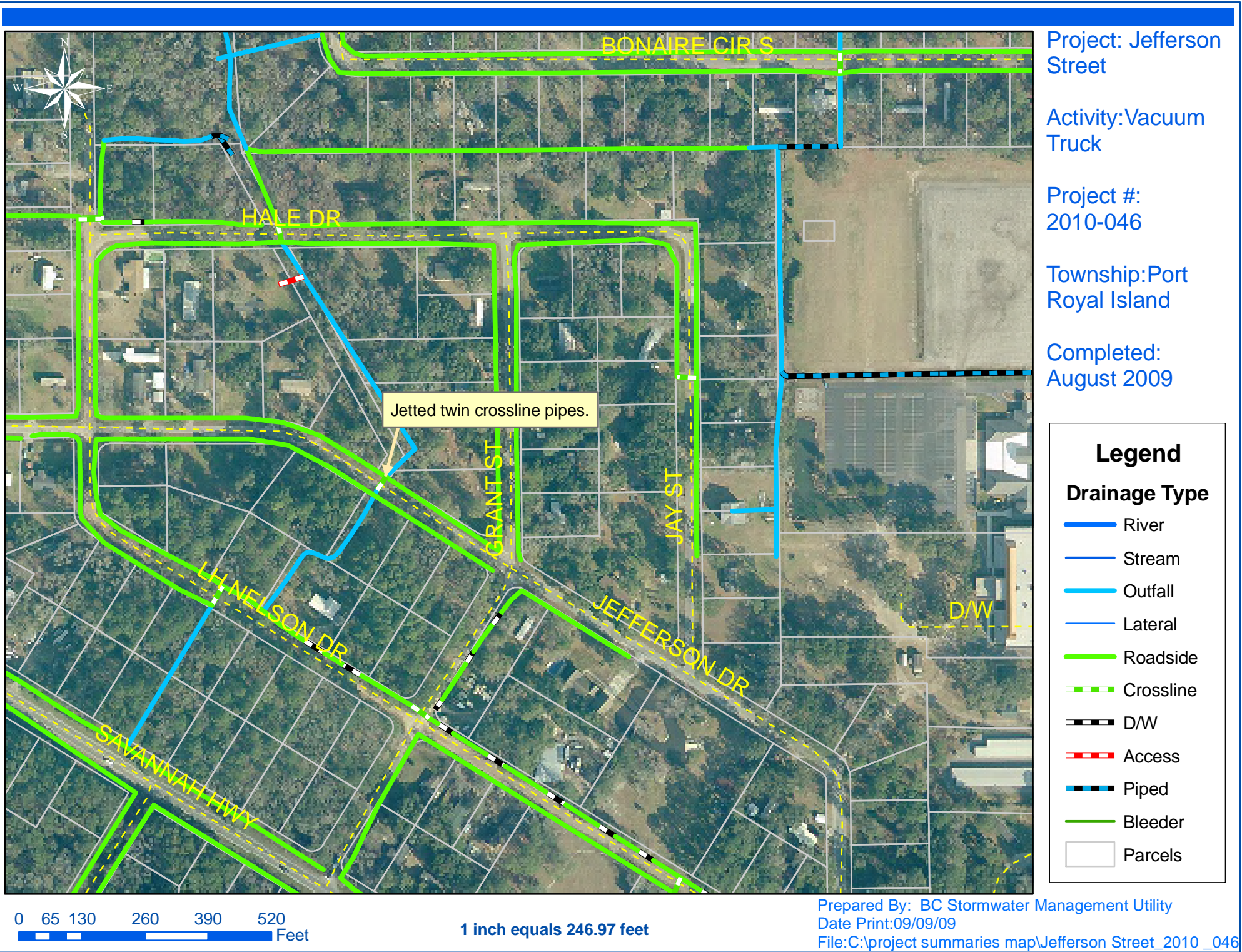
Township:
Port Royal Island

Completed:
August 2009

Legend	
Drainage Type	
	River
	Stream
	Outfall
	Lateral
	Roadside
	Crossline
	D/W
	Access
	Piped
	Bleeder
	Parcels



1 inch equals 174.04 feet



Project: Jefferson Street

Activity: Vacuum Truck

Project #: 2010-046

Township: Port Royal Island

Completed: August 2009

Legend

Drainage Type

- River
- Stream
- Outfall
- Lateral
- Roadside
- - - Crossline
- D/W
- Access
- Piped
- Bleeder
- Parcels

0 65 130 260 390 520 Feet

1 inch equals 246.97 feet

Prepared By: BC Stormwater Management Utility
 Date Print: 09/09/09
 File: C:\project summaries map\Jefferson Street_2010_046